

**LEADERS**

**BUILDING**

**LEADERS**

**SESSION 1**

**SIGN IN**





**LBL  
INTEREST  
FORM**

**ALL  
ATTENDEES  
MUST FILL  
THIS OUT**



# WHAT IS LBL?

- LBL is the Gator Chapter's orientation program for individuals interested in joining NSBE's chapter executive board.
- This program is dedicated to equipping participants with the tools and knowledge required to be an effective executive board member.
- Participants will gain hands-on leadership experience, understand NSBE's structure, and develop the necessary skills to successfully lead within the chapter.



**ICEBREAKER**

# WHAT TYPE OF LEADER ARE YOU?

Take this Leadership Quiz • Types of Leadership Styles:



- Transformational
- Servant
- Democratic
- Autocratic
- Laissez-faire

Discuss The Results With Each Other





**OBJECTIVES**

# OBJECTIVES

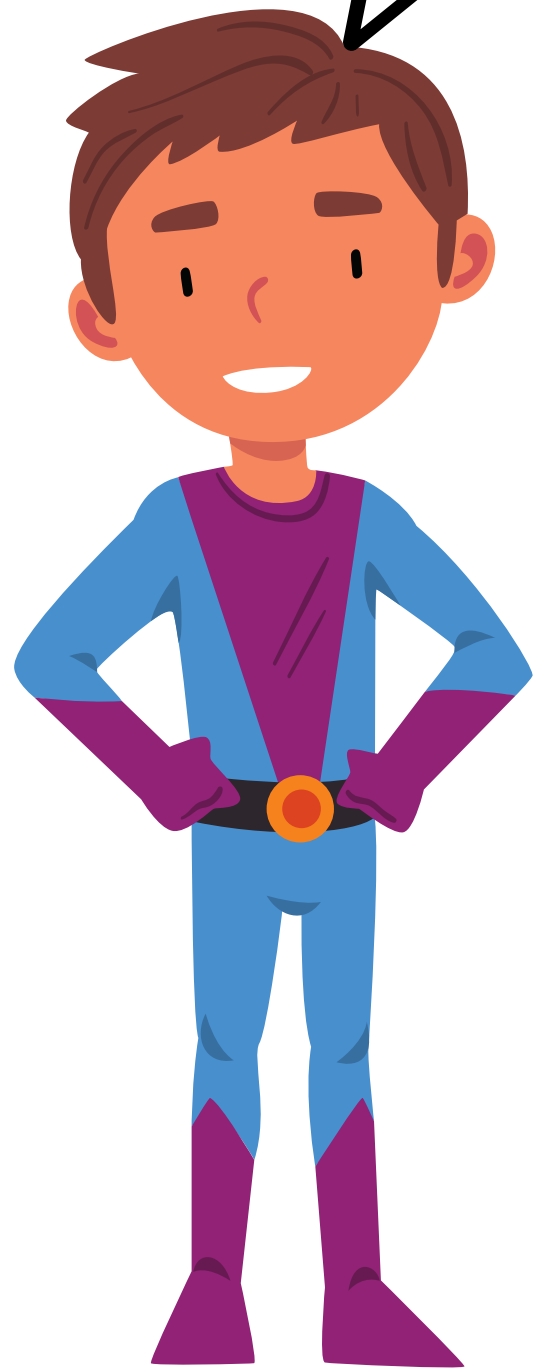
- Introduce participants to NSBE leadership, teamwork, and event planning
- Provide a breakdown of NSBE's structure (National, Regional, Chapter)
- Engage in a leadership workshop through scenario-based team problem-solving
- Begin brainstorming event ideas for Leaders in Action Week
- Assign teams for event planning





**WHAT IS  
NSBE**

Always stand for  
what you believe  
in!!



# OUR MISSION

“To increase the number of culturally responsible Black engineers who excel academically, succeed professionally, and positively impact the community.”

# HISTORY

- In the late 1960s, 80% of Black students entering Purdue's engineering program were dropping out.
- In 1971, Edward Barnett and Fred Cooper founded the Black Society of Engineers (BSE), with Barnett serving as the first president and Dr. Arthur J. Bond (the only Black faculty member at Purdue) as their advisor.
- By 1974, with the guidance of Dr. Bond and young African American students, significant progress was made.



# HISTORY

- Anthony Harris, a member of the soon-to-be founders, renamed the organization Society of Black Engineers and took the first steps to expand it nationally.
- Anthony Barnett emailed 288 accredited schools, and 80 schools responded.
- The first National Meeting took place April 10-12, 1975, with 48 students from 32 schools, including UF.
- During this meeting, by majority vote, the organization was renamed the National Society of Black Engineers (NSBE) and officially incorporated in 1976.



# THE CHICAGO SIX

- NSBE was founded at the first national conference on April 10-12, 1975, at Purdue University by the “Chicago Six”:
  - Anthony Harris
  - Brian Harris
  - Edward Coleman
  - Stanley Kirtley (Deceased)
  - George Smith
  - John Logan (Deceased)



# NSBES LOGO

- Torch – Symbolizes our everlasting burning desire to achieve success in a competitive society and impact lives positively.
- Lightning Bolts – Represent the striking impact NSBE will have on society and industry through the achievements of its dedicated members.
- Proper Logo Use – Always ensure the NSBE logo is displayed correctly, respecting branding guidelines.





# **NSBES STRUCTRE**

# NSBES STRUCTURES



**NEB**

## **National Executive Board**

- Leadership development and advocacy efforts

**REB**

## **Regional Executive Board**

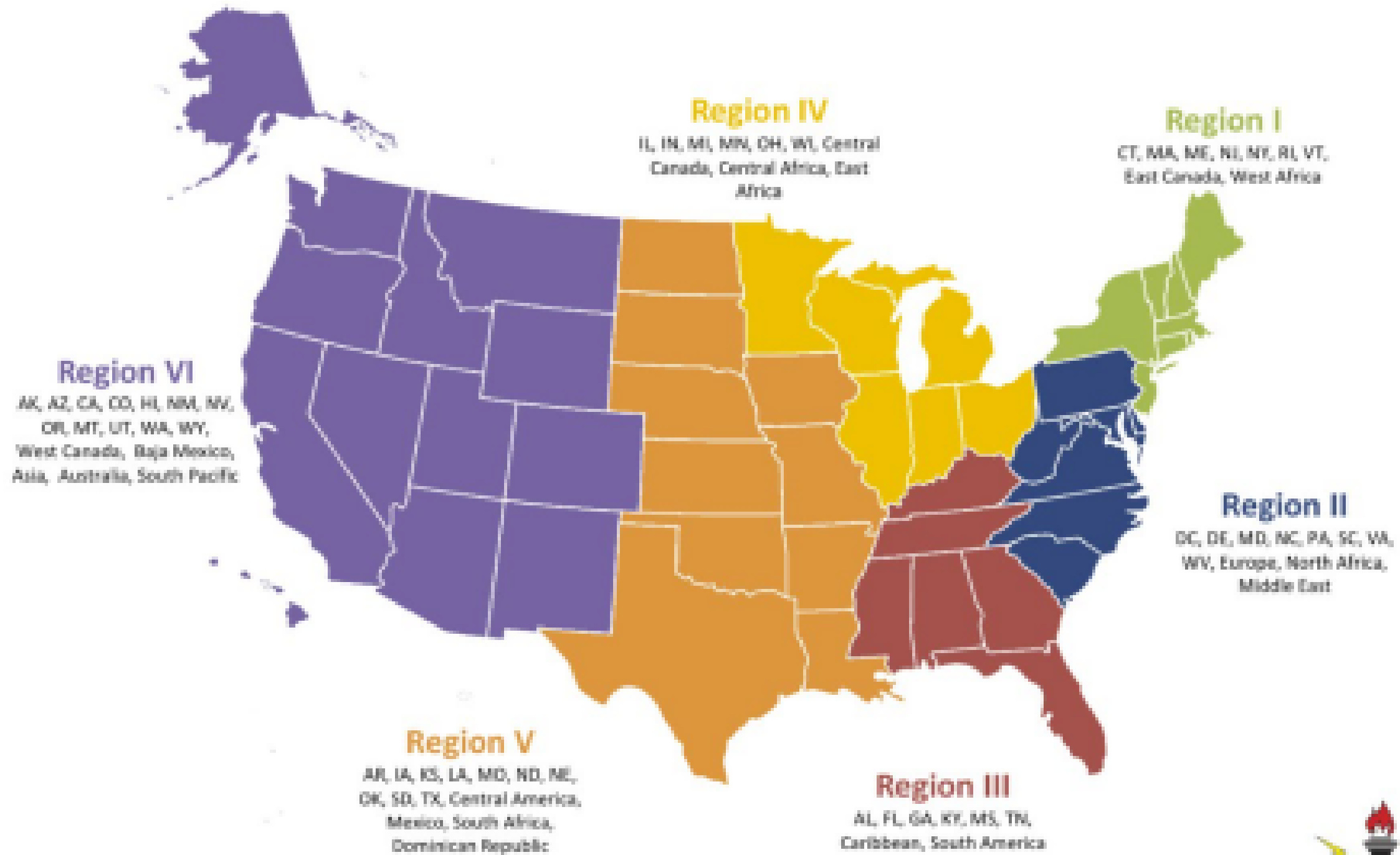
- Six regions with their own leadership structure


**CEB**

## **Chapter Executive Board**

- This is us :)

# REGIONS IN NSBE





**POP  
QUIZ**

# **QUESTION**

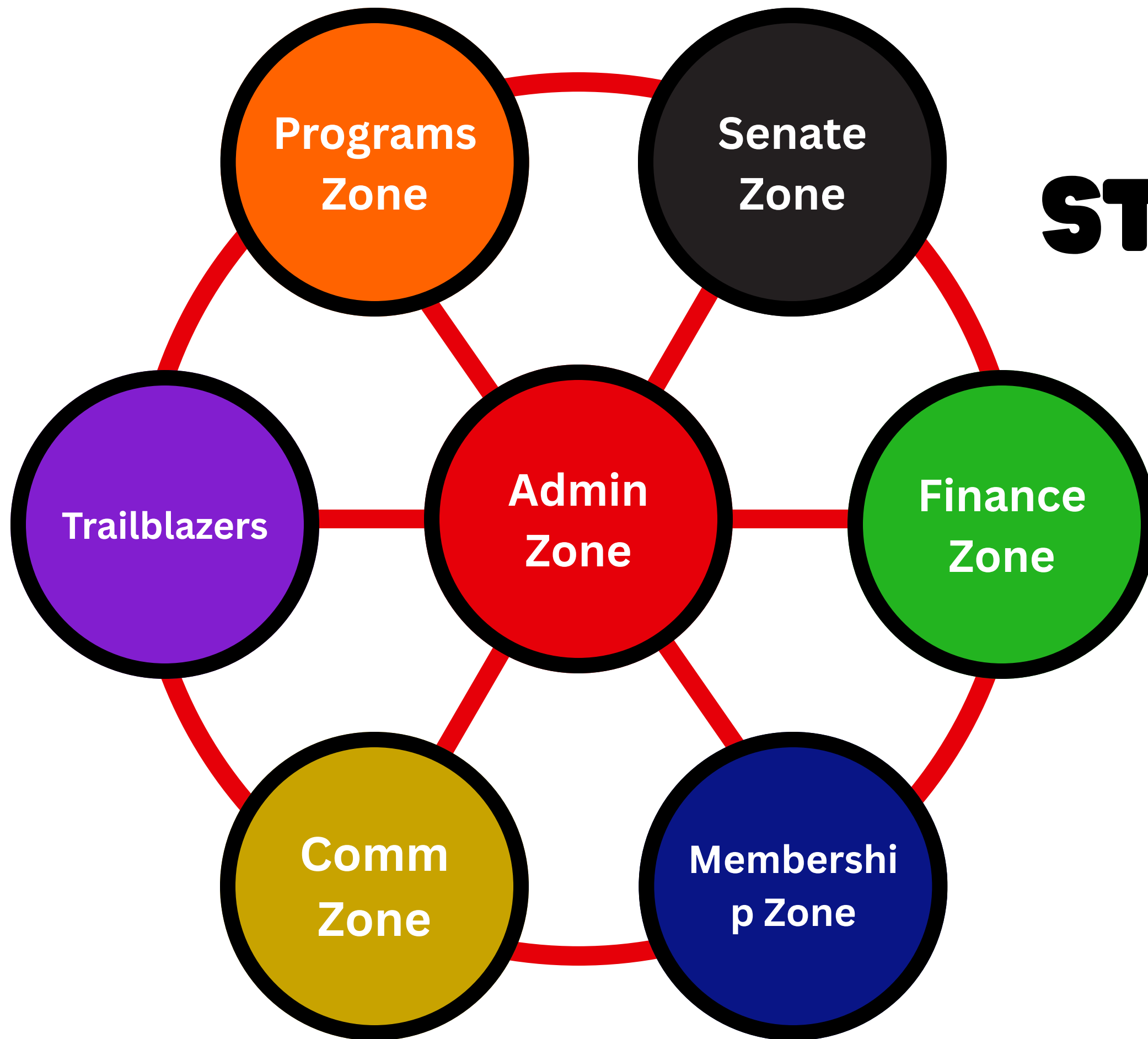
**WHAT REGION IS THE  
GATOR CHAPTER  
LOCATED IN?  
(NUMBER AND NICKNAME)**





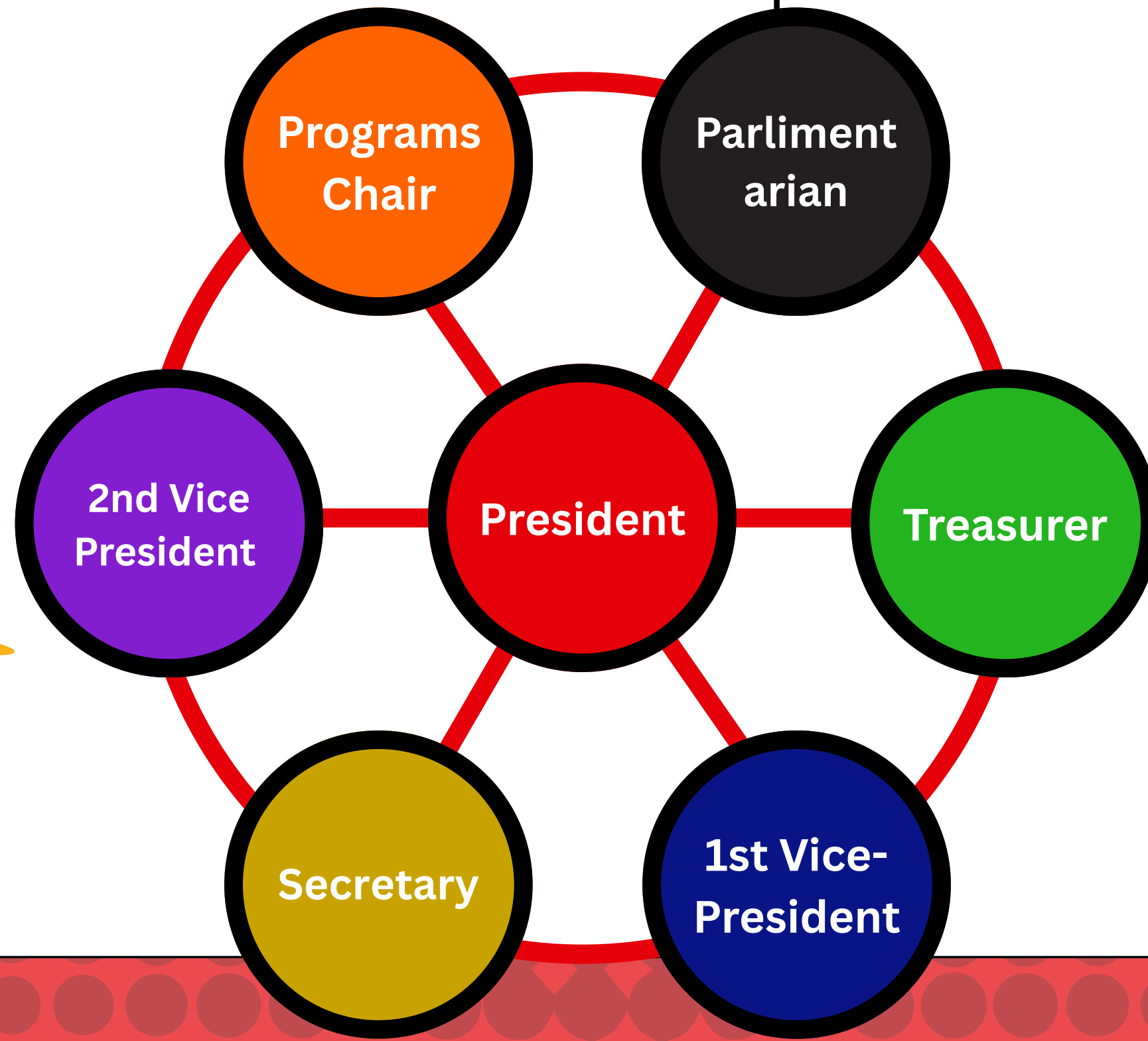
**GATOR CHAPTER  
STRUCTURE**

# ZONE STRUCTRE



# ADMIN ZONE

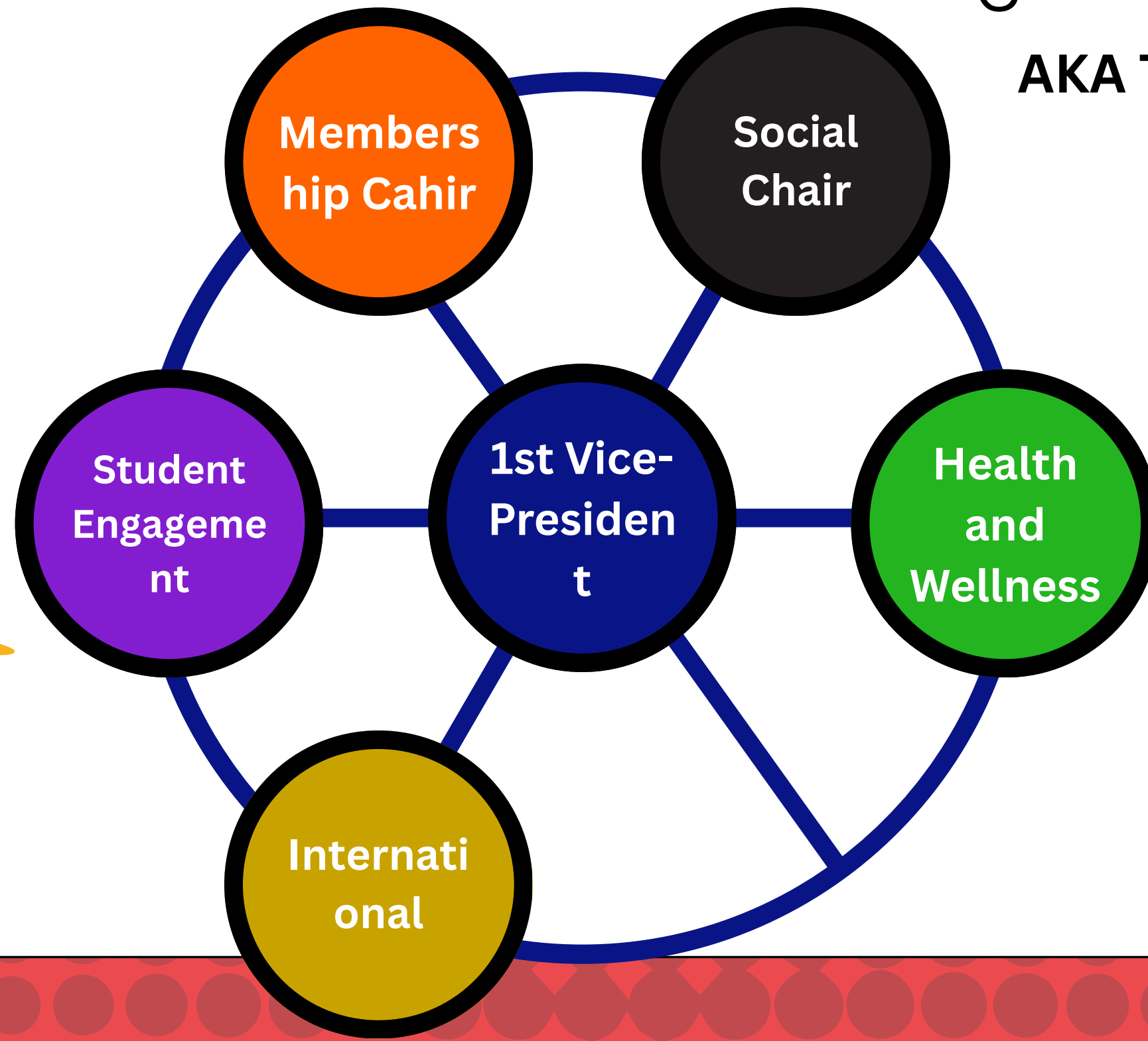
This zone consist of all our Chapter Executive Officers



# MEMBERSHIP ZONE

This zone is dedicated to the wellbeing of our Members

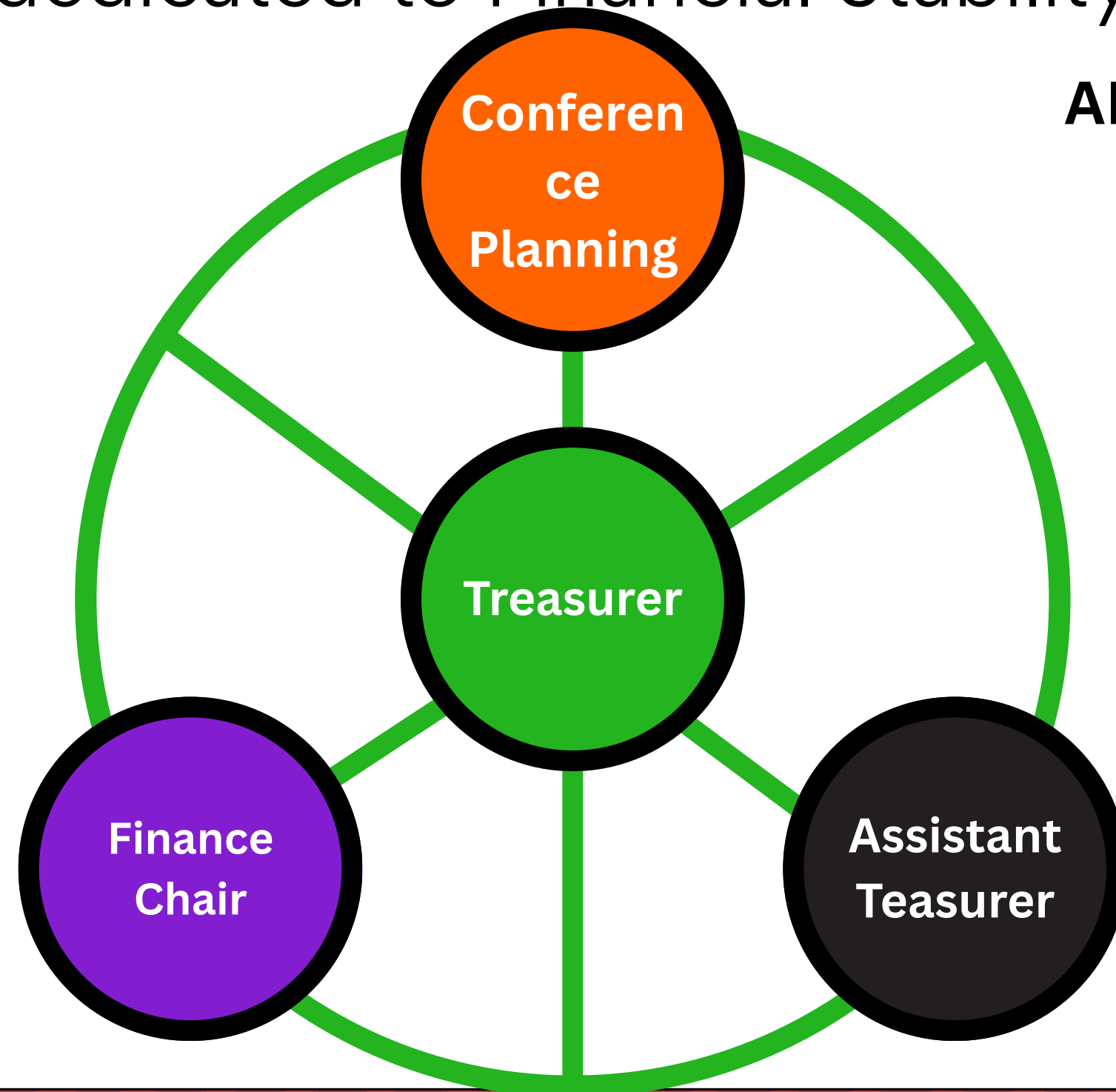
AKA The "Soul" of NSBE



# FIANCE ZONE

This zone is dedicated to Financial Stability of our Chapter

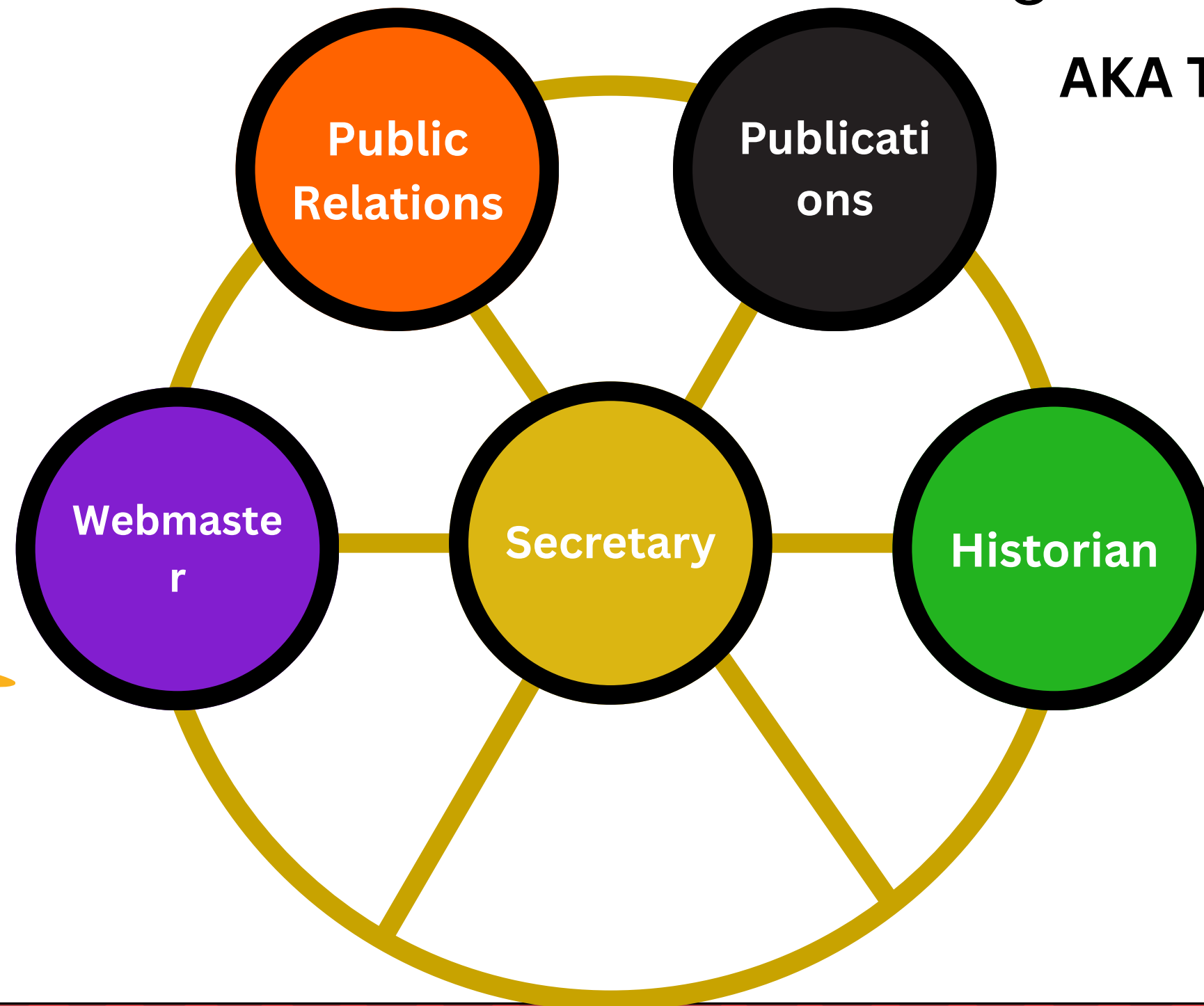
AKA The “Money Team”



# COMMUNICATIONS ZONE

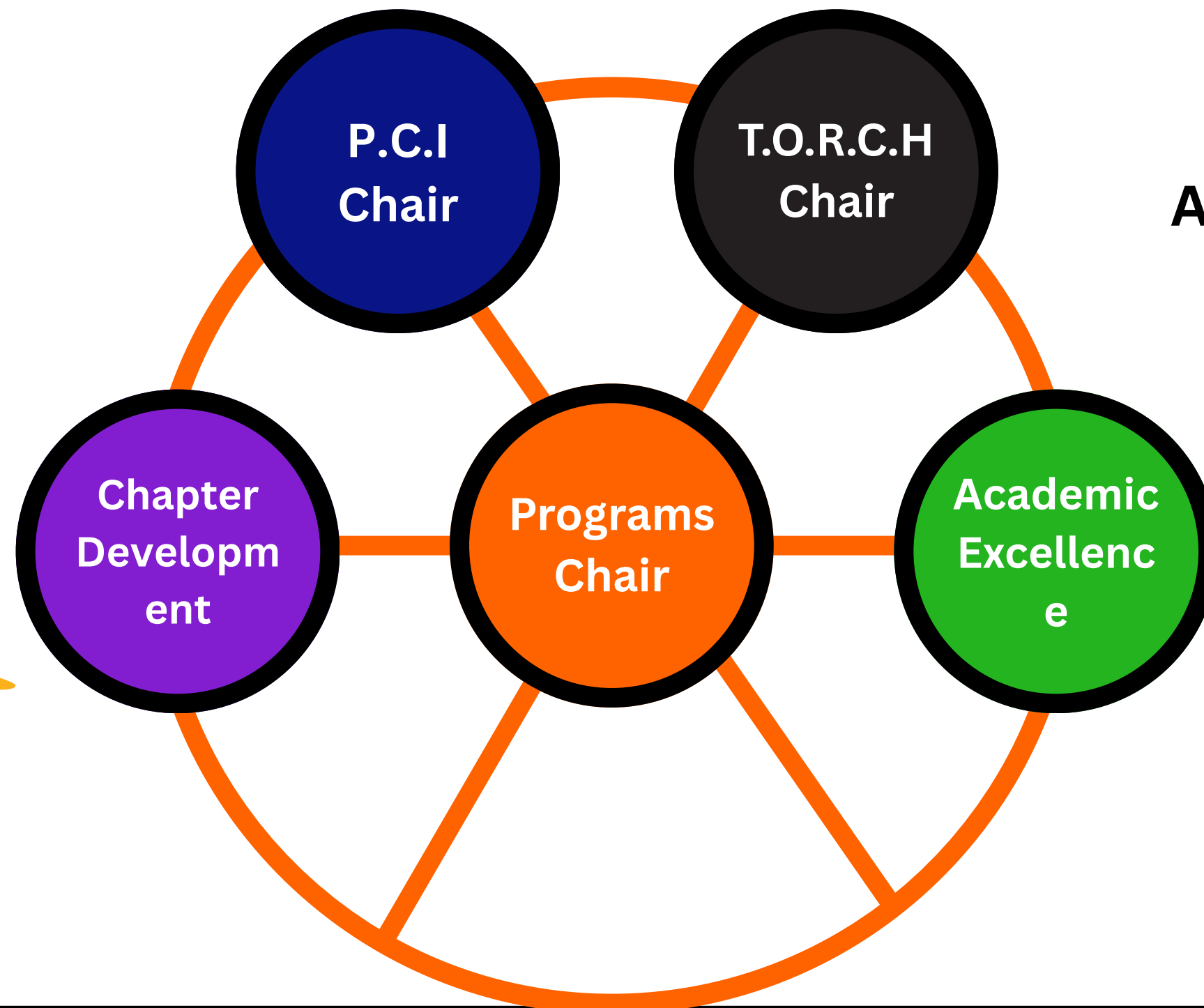
This zone is dedicated to outreach, marketing, and public interaction

AKA The "Voice" of NSBE



# PROGRAMS ZONE

This zone is dedicated to programming, community involvement/outreach, pci, chapter development, (this list goes on)

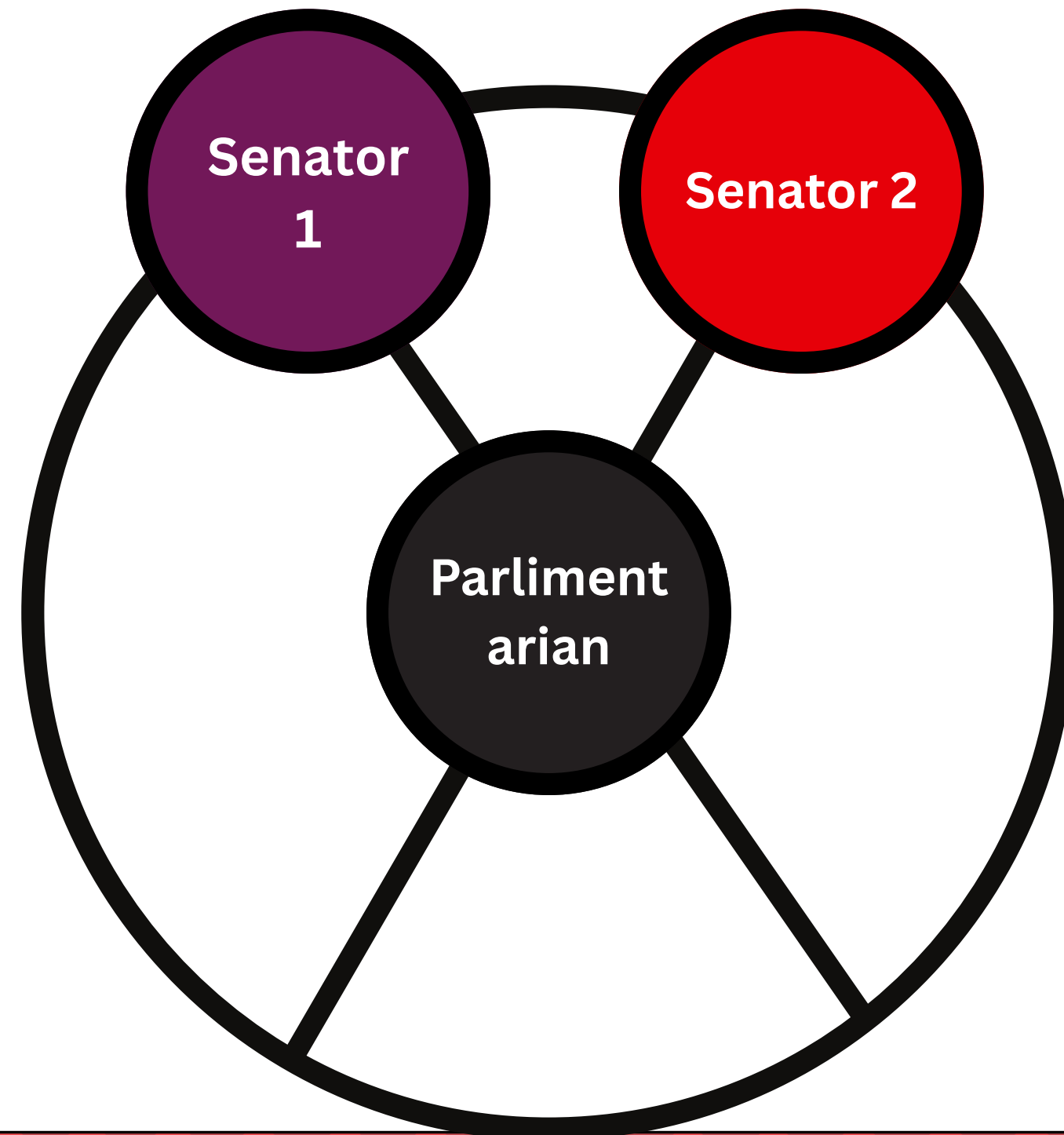


**AKA The "Heart" of NSBE**



# SENATE ZONE

This zone is dedicated to being our representation in NSBE, regionally and Nationally.



AKA The "THE LAW"



# TRAILBLAZERS

This zone is dedicated to are own Orginated FYP Trailblazers





**POP QUIZ!**

**HOW MANY TOTAL POSITIONS  
MAKE UP THE GATOR  
CHPAPTERS EXECUTIVE  
BOARD?**

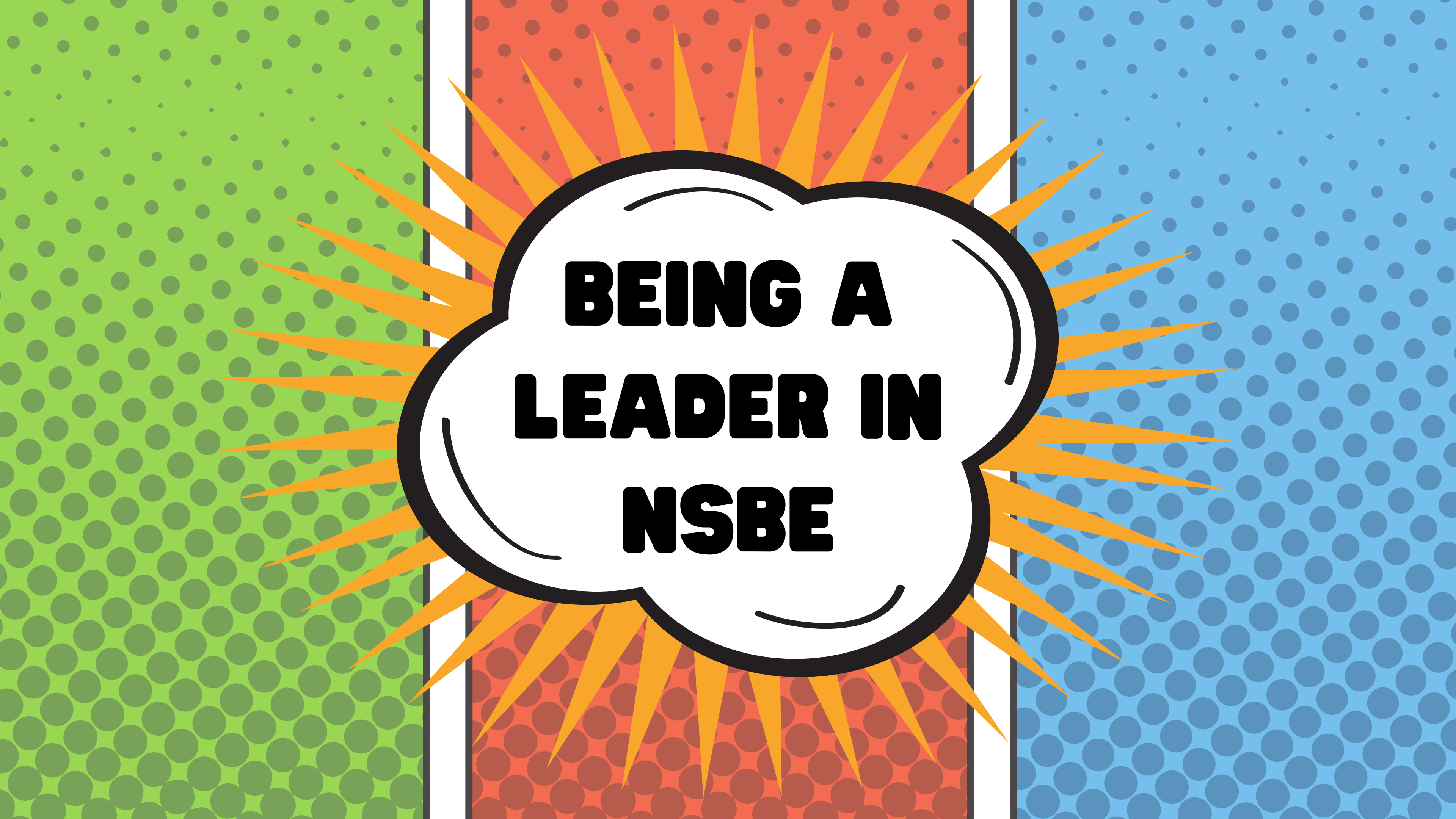


**HINT: (DO NOT COUNT CO-POSITIONS)**

**ANSWER**

**31!**





**BEING A  
LEADER IN  
NSBE**

# **CORE LEADERSHIP QUALITIES:**

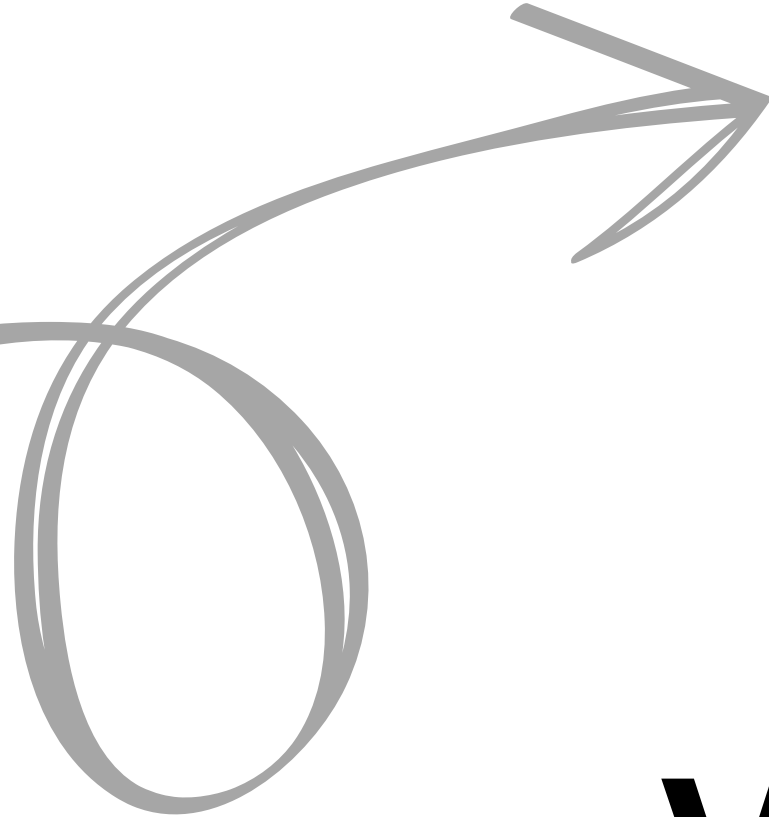
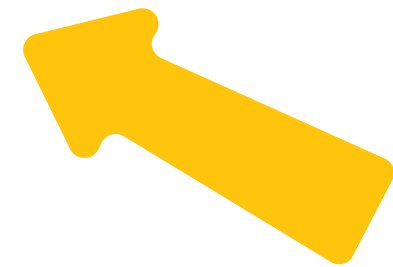
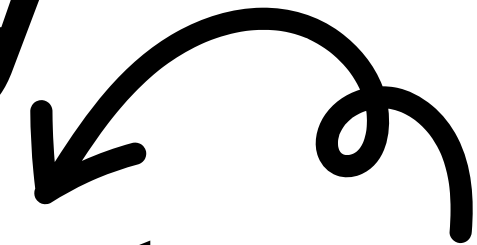
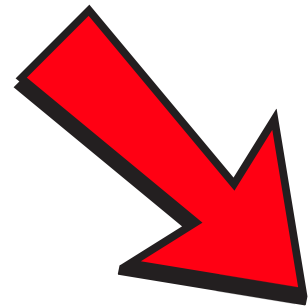
**Accountability**

**Communication**

**Decision-making**

**Conflict resolution**

**Vision and execution**





**LEADERSHIP  
WORKSHOP**

# **SOLVE THIS SCENARIO**

**Your team is in charge of organizing NSBE's Fall Banquet, a high-profile event expected to host members, alumni, and sponsors. Everything has been meticulously planned, but the day before the event, a major problem arises that threatens to derail your efforts. Your team must think quickly, communicate effectively, and implement a solution to ensure the event remains a success.**

**Each team will be assigned one of the following unexpected challenges:**

- **SCENARIO 1: THE HOST CANCELS LAST-MINUTE**
- **SCENARIO 2: 20+ ATTENDEES CANCEL LAST-MINUTE**
- **SCENARIO 3: VENUE EXPERIENCES TECHNICAL DIFFICULTIES (EX. NO MIC, SCREEN DOESNT WORK, ECT)**
- **SCENARIO 4: RAIN AFFECTING TRAVEL**

# **INSTRUCTIONS FOR TEAMS:**

- Split into teams and receive your assigned crisis.
- Discuss possible solutions and come up with a plan of action.
- Consider real-world constraints (e.g., time, budget, resources).
- Present your solution to the group in a structured format.



**LEADERS IN  
ACTION  
WEEK**

# WHAT IS LEADERS IN ACTION WEEK?

- **Leaders in Action Week** is the culminating project for LBL participants (aside from required assessments), where they will apply their leadership and event planning skills in real-time.
- Throughout the week, teams will organize and manage various NSBE events that align with NSBE's mission and chapter goals.
- This is an opportunity for participants to take ownership of an event, work collaboratively, and experience the challenges and rewards of leadership firsthand.

# **EVENT CATEGORIES MAY INCLUDE:**

- **Professional Development** (Workshops, Career Panels, Resume Reviews, ect...)
- **Social Engagement** (Game Nights, Potlucks, ect..)
- **Community Outreach** (Volunteer Work, Mentorship )
- **Technical Events** (Coding Class, Intro to EE maybe idk)
- **Fundraisers**
- **Collabs With other Organizations**
- **Anything your mind comes up with**
- **Note:** All events must be submitted and approved by **Vice-President and/or President**

## **EXPECTATIONS:**

- **Teams will fully plan and execute an event.**
- **Each team will present their finalized event plan for approval.**
- **Expect 100% participation from all group members.**
- Have fun, this is a great chance to do something out of the box and fun!

**GROUPS WILL BE DETERMINED ONCE CHARLES GETS BACK TO GV (SUNDAY) AND EVERYONE FILLS OUT LBL INTEREST FORM**

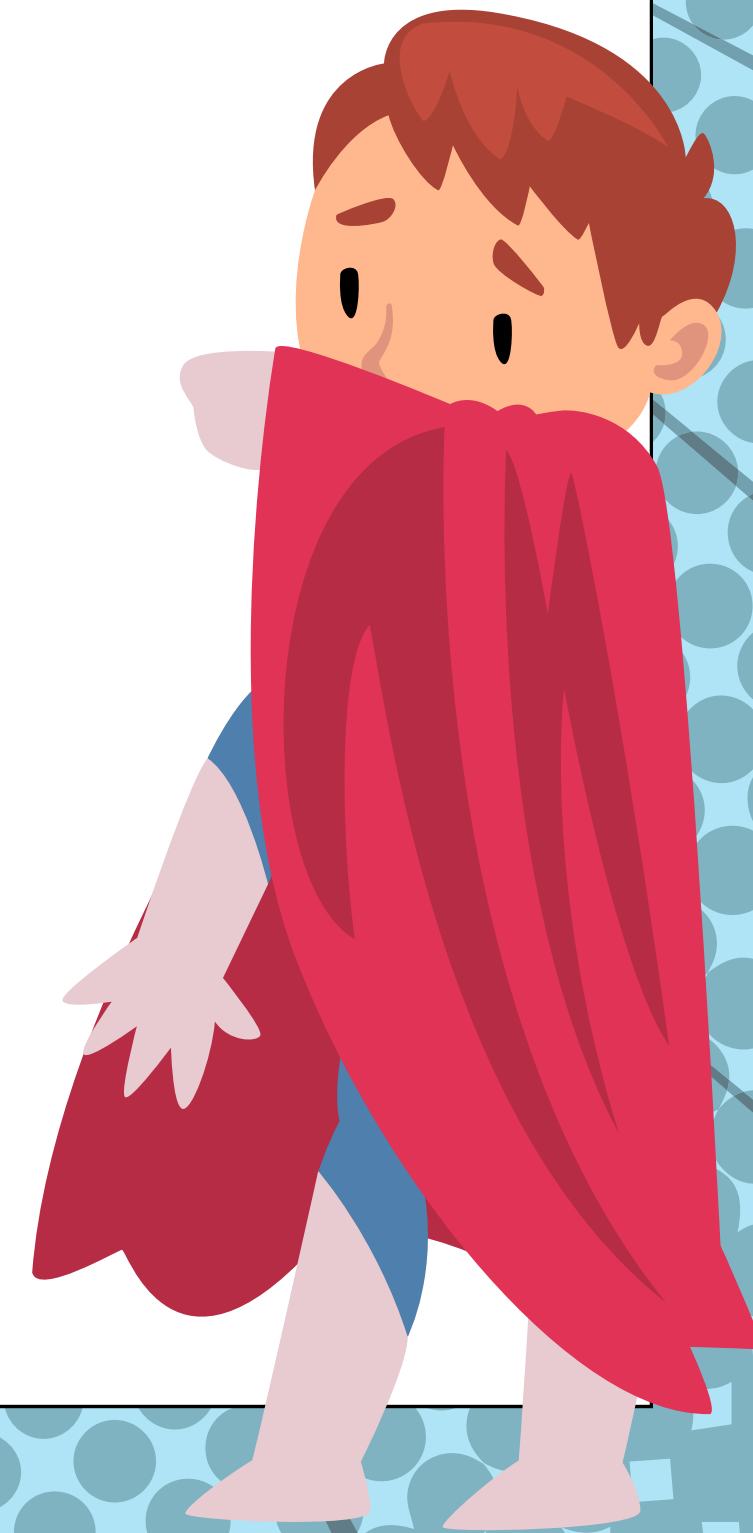
# SESSION WRAP-UP & "HOMEWORK"

## Next Steps:

- Start thinking about what type of event you'd like to do.
- Begin with a basic outline (Theme, location)

## Homework:

- Prepare a 1-minute pitch for your event idea (to be presented in Session 2)
- Start thinking about 2-3 positions you would be interested in and reach out to those in them. (For those who **completed** the shadowing initiative you may skip this.)
  - Email **president.ufnsbe@gmail.com** 2-3 sentences for each person you talked to and what you learned about the position. Must be done before LBL Session 2.



# THANK YOU FOR COMING

Questions?

- **Email:**
- [president.ufnsbe@gmail.com](mailto:president.ufnsbe@gmail.com)
- [bribri5042](#)

Next Session: April 1, 2026  
(Programming & Public Speaking)

